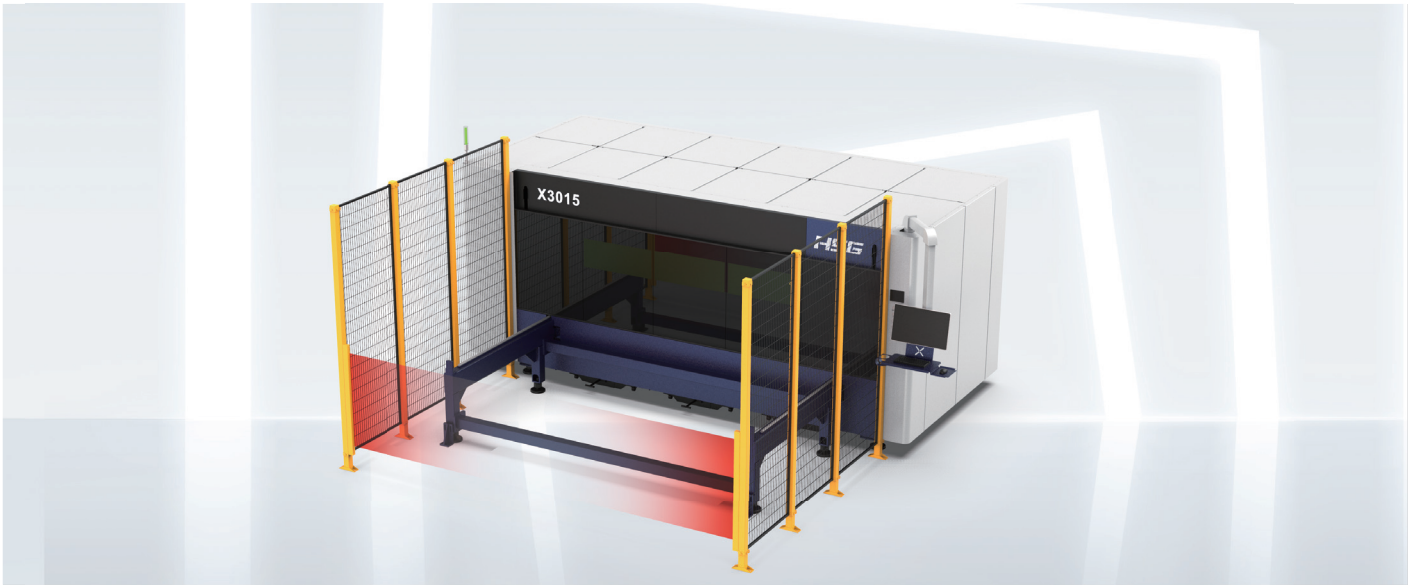


X

Compact Laser Cutting Machine

MINIMIZE EQUIPMENT SIZE WHILE ENSURING PROCESSING CAPABILITY



Laser Power

1.5-12kW

Max. Linkage Acceleration

1.5G

Max. Linkage Speed

120m/min

PRODUCT OVERVIEW

Compact Design, Small Footprint



The design concept of the X series cutting machine is to minimize equipment size while ensuring processing capability, reducing equipment footprint, and saving space for customers.

TYPICAL PROCESSING

High Processing Efficiency, Strong Processing Capability

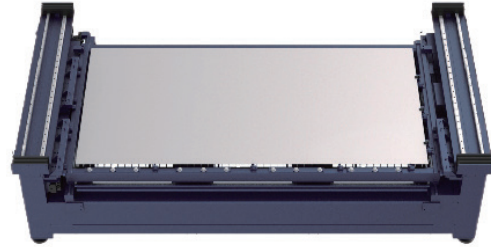


The overall machine acceleration reaches 1.5G, greatly improving processing efficiency. The cutting worktable can bear a sheet weight of up to 1,000kg, meeting the highest thickness of 30mm for whole sheet processing, resulting in higher processing capability.

IMPROVE PROCESSING QUALITY

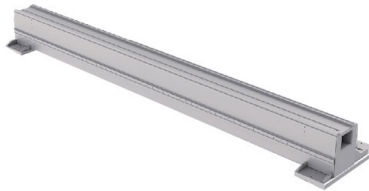
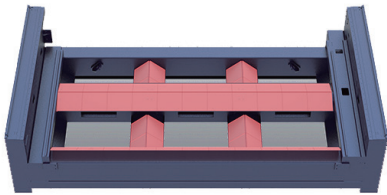
Secondary Processing Positioning System

The workbench is equipped with mechanical positioning blocks and cylinder clamping to ensure the stability of secondary processing positioning.

**RELIABLE & DURABLE**

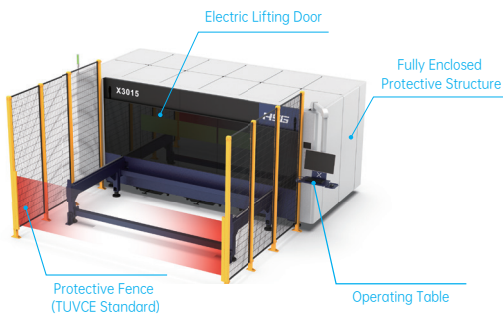
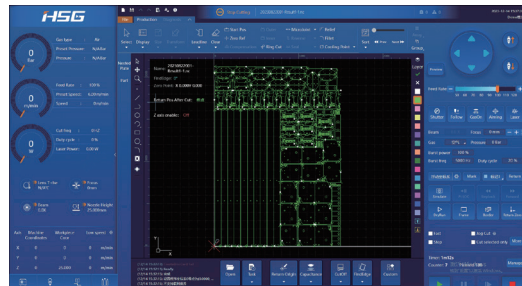
High Stability and Long-lasting Durability

The bed is covered with manganese steel anti-burn sheet, effectively blocking laser heat and avoiding thermal deformation. The fifth-generation extruded aluminum beam significantly improves torsional resistance, ensuring stable operation and durability of the equipment.

**EASY TO USE**

Bus Control System with Richer System Functionality

Utilizing HSG's self-developed AlphaT 2.0/Plus bus system, integrating a wealth of sheet metal processing techniques: lightning piercing, disk centering, slag removal after piercing, seamless micro-welding, perfect tool retraction, etc., making sheet metal cutting simpler.

**CARE YOUR SAFETY**

Full protective structure, compliant With TUVCE Certification Standards (Optional)

The equipment adopts a fully enclosed structure with OD glass to prevent laser radiation; grilles, fences, and monitoring further prevent machine operation from causing harm to humans.

TECHNICAL PARAMETERS

Model	X3015
Laser Power	1.5-12kW
Cutting Area(Length*Width)	3048×1524mm (1.5-6kW) / 3000mm×1500mm (12kW)
Maximum Acceleration	1.5G
Max. Linkage Speed	120m/min
Operating System	AlphaT 2.0 (1.5-6kW) / AlphaT Plus (12kW)

*Information and images are for reference only. Final specifications and terms are subject to the contract and may change without notice.